

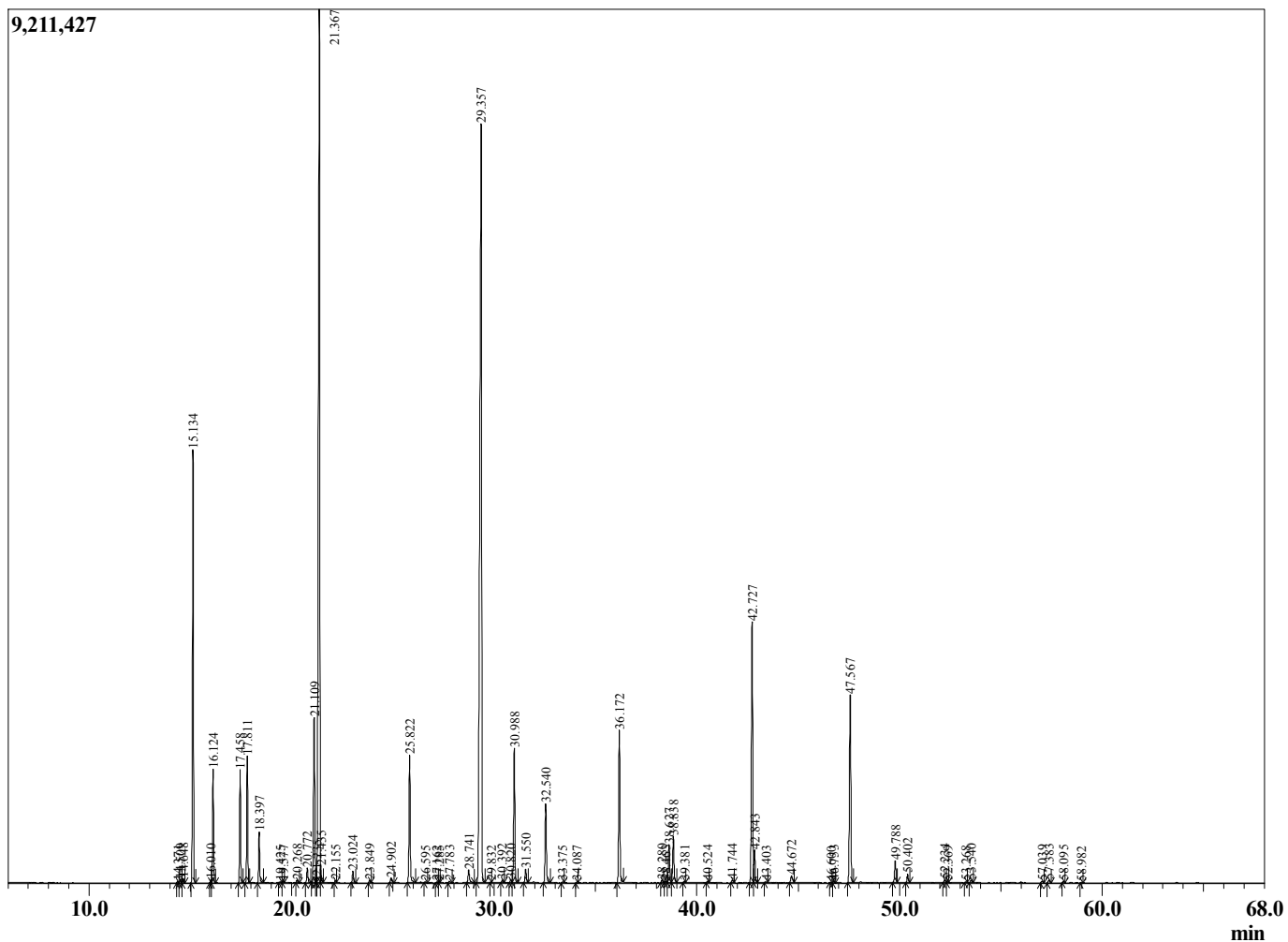
Sample Information

Sample Type : Essential Oil
 Sample Name : Salvia lavandulifolia

Sage Spanish
 Lot# SPP9-PW
 Country: Spain



Chromatogram Salvia lavandulifolia



Peak Report TIC

R.Time	Name	Area%
14.371	Hashishene	0.03
14.509	Tricyclene	0.06
14.648	alpha-Thujene	0.08
15.134	alpha-Pinene	8.21
16.010	alpha-Fenchene	0.07
16.124	Camphene	2.10
17.458	Sabinene	2.16
17.811	beta-Pinene	2.45
18.397	Myrcene	1.00
19.425	Pseudolimonene	0.02
19.577	alpha-Phellandrene	0.03
20.268	alpha-Terpinene	0.05
20.772	para-Cymene	0.32
21.109	Limonene	3.99
21.235	beta-Phellandrene	0.06
21.367	1,8-cineole	23.65
21.435	cis-beta-Ocimene	0.17
22.155	trans-beta-Ocimene	0.05
23.024	gamma-Terpinene	0.25
23.849	trans-Sabinene hydrate	0.06
24.902	Terpinolene	0.12
25.822	Linalool	2.84
26.595	Thujol isomer	0.02
27.162	alpha-Thujone	0.02
27.285	alpha-Fenchol	0.02
27.783	Unidentified	0.04
28.741	trans-Sabinol	0.36
29.357	Camphor	27.21
29.832	trans-beta-Terpineol	0.01
30.392	Isoborneol	0.05
30.820	delta-Terpineol	0.08
30.988	Borneol	3.08
31.550	Terpinen-4-ol	0.31
32.540	alpha-Terpineol	1.85
33.375	Verbenone	0.02
34.087	alpha-Fenchyl acetate	0.02
36.172	Linalyl acetate	3.57
38.280	Unidentified	0.07
38.463	beta-Terpinyl acetate	0.04
38.627	Bornyl acetate	0.88
38.838	trans-Sabinyl acetate	1.11
39.381	Unidentified	0.02
40.524	delta-Terpinyl acetate	0.03
41.744	Unidentified	0.07
42.727	alpha-Terpinyl acetate	6.48
42.843	gamma-Terpinyl acetate	0.73
43.403	Neryl acetate	0.02
44.672	Geranyl acetate	0.24
46.600	cis-beta-Caryophyllene	0.01
46.753	alpha-Gurjunene	0.03
47.567	beta-Caryophyllene	4.75
49.788	alpha-Humulene	0.54
50.402	Geranyl propionate	0.20
52.234	Bicyclogermacrene	0.08
52.369	alpha-Murolene	0.01
53.268	gamma-Cadinene	0.02

R.Time	Name	Area%
53.540	delta-Cadinene	0.07
57.039	Spathulenol	0.04
57.383	Caryophyllene oxide	0.08
58.095	Viridiflorol	0.04
58.982	Humulene epoxide II	0.01
		100.00